

SPRING ICE SHOW 2025
GUIDEBOOK

GLENVIEW COMMUNITY ICE CENTER

GLIDE INTO THE

WILD

2025

> REGISTER NOW

Friday- May 2nd, 2025 6:30pm
Saturday- May 3rd, 2025 4:30pm
Sunday- May 4th, 2025 1:30pm





TABLE OF CONTENTS

TABLE OF CONTENTS	PG 2
REGISTRATION INFORMATION & FEES	PG 3
PRACTICES/REHEARSALS	PG 4
COSTUME MEASUREMENTS AND DATES	PG 5
GROUP NUMBERS	PG 6 & 7
ADDITIONAL NUMBERS	PG 8 & 9
SOLOS/DUETS	PG 10
IMPORTANT DATES & TIMES	PG 11
CONTACT INFORMATION	PG 12



REGISTRATION INFORMATION

To register, *visit www.glenviewicecenter.org* or scan the QR code. Registration is also accepted at the Front Desk during registration hours, M-F 8:30a-5:30p, Sat 9:00a-1:00p. Registration will remain open through Saturday, December 7th. All participants need to be measured before they register.

To be eligible to participate in a group number, all skaters must:

- 1) Be enrolled in at least one learn to skate session during the 2024 to 2025 season (Fall to Winter) and/or*
- 2) Skate a minimum of two hours of freestyle ice per week for the 2024 to 2025 season (September 2024 to May 2025) at the Glenview Community Ice Center.*

Skaters will be placed in group numbers according to their class level as of the current class session beginning December 3, 2024 and/or their highest USFS competitive/test freestyle passed as of November 30, 2024. This will allow all the skaters in each group number to be familiar and comfortable with the elements that are required for their group number.

(no exceptions will be made to this rule)

REGISTRATION FEES

Class levels: Snowplow Sam 1-3 and Basic 1-2 Group Numbers **\$80**

Class levels: Basic 3, 4, 5, 6, and Pre-FS Group Numbers **\$130**

Class levels: Bronze, Silver, Gold, Platinum, Platinum Plus Group Numbers **\$130**

Each additional group number **\$75**

Class levels: Adult Number **\$80**

Soloist/Duet: **\$20**

PRACTICES & REHEARSALS

Snowplow Sam 1-3

Tuesday, April 1st 5:30-6:10pm
Tuesday, April 8th 5:30-6:10pm
Saturday, April 19th 12:00-12:40pm
Saturday, April 26th 12:00-12:40pm

Basic 1 & 2

Tuesday, April 1st 6:10-6:50pm
Tuesday, April 8th 6:10-6:50pm
Saturday, April 19th 12:00-12:40pm
Saturday, April 26th 12:00-12:40pm

Basic 3 & 4

Tuesday, April 1st 5:30-6:10pm
Tuesday, April 8th 5:30-6:10pm
Saturday, April 19th 12:40-1:20pm
Saturday, April 26th 12:40-1:20pm

Basic 5, 6, & Pre Free Skate

Tuesday, April 1st 6:10-6:50pm
Tuesday, April 8th 6:10-6:50pm
Saturday, April 19th 1:20-2:00pm
Saturday, April 26th 1:20-2:00pm

Adults

Friday, March 21st 6:40-7:40pm
Friday, April 4th 6:40-7:40pm
Friday, April 11th 6:40-7:40pm
Friday, April 18th 6:40-7:40pm
Friday, April 25th 6:40-7:40pm

Bronze/ Silver

Tuesday, April 1st 6:50-7:30pm
Tuesday, April 8th 6:50-7:30pm
Saturday, April 19th 2:00-2:40pm
Saturday, April 26th 2:00-2:40pm

Gold/Platinum

Tuesday, April 1st 6:10-6:40pm (*off-ice*)
Tuesday, April 1st 6:50-7:30pm
Tuesday, April 8th 6:10-6:40pm (*off-ice*)
Tuesday, April 8th 6:50-7:30pm
Saturday, April 19th 3:10-3:40pm (*off-ice*)
Saturday, April 19th 3:50-4:40pm
Saturday, April 26th 3:10-3:40pm (*off-ice*)
Saturday, April 26th 3:50-4:40pm

Graduating Seniors Number

Friday, March 21st 6:40-7:40pm
Friday, April 4th 6:40-7:40pm
Friday, April 11th 6:40-7:40pm
Friday, April 18th 6:40-7:40pm
Friday, April 25th 6:40-7:40pm

All rehearsals will take place Tuesdays through Saturdays. Rehearsals will begin Tuesday, March 11, 2025. Find your level to see your rehearsal schedule.

Glenview Blades

Preliminary/Pre-Juvenile

Thursday, March 13th 6:00-7:00am
Thursday, March 20th 6:00-7:00am
Thursday, April 17th 6:00-7:00am

Glenview Blades

Aspire 1 & Aspire 3

Tuesday, March 18th 5:30-6:10pm
Saturday, April 12th 4:30-5:30pm
Saturday April 26th 2:50-3:30pm

Soloist/Duet Freestyle Sessions (\$7per 30min)

Thursday, March 13th 7:00-7:30am
Thursday, March 20th 7:00-7:30am
Thursday, April 3rd 6:00-7:30am
Thursday, April 10th 6:00-7:30am
Thursday, April 17th 7:00-7:30am
Thursday, April 24th 6:00-7:30am

Platinum Plus

Saturday, April 12th 3:50-4:30pm
Saturday, April 19th 2:50-3:50pm
Saturday, April 26th 2:50-3:50pm

Basic 3-Bronze Specialty

Tuesday, March 11th 5:30-6:10pm
Saturday, April 12th 3:10-3:50pm
Tuesday, April 15th 5:30-6:10pm
Tuesday, April 22nd 5:30-6:10pm

High School

Tuesday, March 11th 5:30-6:10pm
Thursday, March 13th 6:30-7:00pm (*off-ice*)
Thursday, March 20th 6:30-7:00pm (*off-ice*)
Saturday, April 12th 2:00-3:00pm
Tuesday, April 15th 5:30-6:10pm
Tuesday, April 22nd 5:30-6:10pm

Soloist Flag Opening

Tuesday, March 11th 6:10-6:50pm
Tuesday, March 18th 6:10-6:50pm
Saturday, April 12th 1:00-2:00pm
Tuesday, April 15th 6:10-6:50pm
Tuesday, April 22th 6:10-6:50pm

Production

Tuesday, March 11th 6:50-7:30pm
Tuesday, March 18th 6:50-7:30pm
Saturday, April 12th 12:00-1:00pm
Tuesday, April 15th 6:50-7:30pm
Saturday, April 19th 4:40-5:30pm
Tuesday, April 22nd 6:50-7:30pm
Saturday, April 26th 4:40-5:30pm

COSTUME MEASUREMENTS

Measurements for group number costumes must be taken before registration. Skaters need to have a parent or guardian present in order to be measured. Measurements for costumes will be taken by Julie Brinskelle and/or Jasmine DeCola. Soloists and duets are required to provide their own costume for their assigned program.

MEASUREMENT DATES

- *Tuesday, November 12th 4:30-6:30pm*
- *Thursday, November 14th 4:30-6:30pm*
- *Saturday, November 16th 8:00-11:00am*

- *Tuesday, November 19th 4:30-6:30pm*
- *Thursday, November 21st 4:30-6:30pm*
- *Saturday, November 23rd 8:00-11:00am*

- *Tuesday, December 3rd 4:30-6:30pm*
- *Thursday, December 5th 4:30-6:30pm*
- *Saturday, December 7th 8:00-11:00am*

SNOWPLOW SAM 1-3 & BASIC PRE-FREE SKATE

Snowplow Sam 1-3 (318025-A)

All Snowplow Sam Skaters registered for GPD Skating Academy Classes for Fall 2024 or our current 2024-25 Winter Session are eligible to register.

Basic 1&2 (318025-B)

All Basic 1&2 Skaters registered for GPD Skating Academy Classes for Fall 2024 or our current 2024-25 Winter Session are eligible to register.

Basic 3&4 (318025-C)

All Basic 3&4 Skaters registered for GPD Skating Academy Classes for Fall 2024 or our current 2024-25 Winter Session are eligible to register.

Basic 5, 6 & Pre-Free Skate (318025-D)

All Basic 5, 6, & Pre Free Skate Skaters registered for GPD Skating Academy Classes for Fall 2024 or the current 2024-25 Winter Session are eligible to register.



FREESKATE/FREESTYLE LEVELS

Bronze/Silver (318025-E)

Includes the following levels:

Bronze, Silver or Passed Pre-Preliminary as of 11/23/24

Gold/ Platinum (318025-F)

Gold Through Pre/Open Juvenile Freestyle levels includes the following levels:

Gold, Platinum, or Passed Preliminary, Pre-Juvenile, Juvenile Freestyle level as of 11/23/24

Platinum Plus (318025-G)

Intermediate-Senior Includes the following levels:

Intermediate, Novice, Junior, Senior

Passed Intermediate Freestyle as of 11/23/24



ADDITIONAL NUMBERS

Opening Flag Soloist Number (318025-H)

Only soloists/duets are eligible to be a part of this opening number.

Production (318025-I)

Silver and up

Open to all skaters who are in Silver and above levels.

Basic 3 through Bronze Specialty (318025-J)

Open to skaters in levels Basic 3, Basic 4, Basic 5, Basic 6, Pre-free skate, and Bronze.

High School Number (318025-K)

Freshmen through Seniors

High school number is open to all high school participants.

Glenview Blades Aspire 1 & Aspire 3

Open to Glenview Blades skaters on the Aspire 1 and Aspire 3 team for the 2024-2025 season.

Glenview Blades Preliminary & Pre-Juvenile

Open to Glenview Blades skaters on the Preliminary and Pre-Juvenile team for the 2024-2025 season.



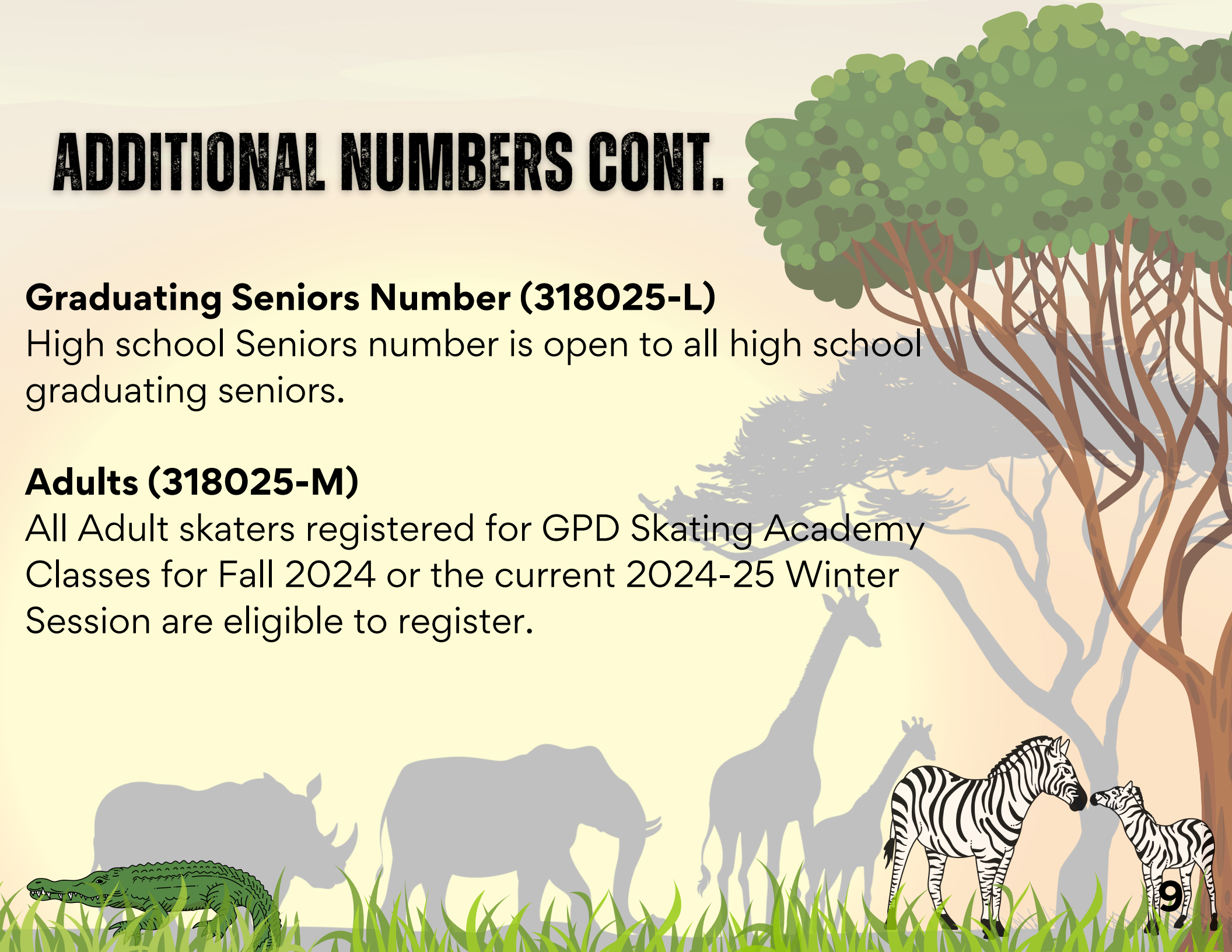
ADDITIONAL NUMBERS CONT.

Graduating Seniors Number (318025-L)

High school Seniors number is open to all high school graduating seniors.

Adults (318025-M)

All Adult skaters registered for GPD Skating Academy Classes for Fall 2024 or the current 2024-25 Winter Session are eligible to register.





SOLOISTS/DUETS

Soloist (318026-A)

Duet (318026-B)

Solos/Duets will be distributed and communicated to skaters by March 8th. If a skater fits the criteria to perform a solo/duet in the Ice Show, please register that skater for a solo/duet at the time of registration. If a skater is unsure if they want to perform a solo/duet, please see Julie Brinskelle. Solos/duets are reserved for skaters who have been registered in Glenview Community Ice Center programming since October 1, 2024.

Soloist/Duet Criteria-

1. Approval from the Show Director
2. Passed Silver/Free Skate 4 as of 11/23/24
3. Passed Preliminary as of 11/23/24 with proof of test passed.
4. Registered in at least one Ice Show group number (Gold Free Skate 5 or higher) in “Glide Into The Wild”
5. Enrolled in at least ONE GPD Skating Academy Learn-to-Skate Session (Gold Free Skate 5 or higher) since October 1, 2024 and/or skate regularly 2 hours per week at GCIC beginning November 23rd, 2024- April 2025.

ALL solos/duets will be determined after registration.

The decision for solos/duets will be made according to registrations, and will begin mid January.

Skaters registered for a solo/duet are guaranteed at least one show.

Multiple solo/duet performances may be awarded to skaters after registration.

All soloist/duets must perform in at least one group number or have permission from the Show Director.

Soloists/Duets need to register for the Opening Flag Number.

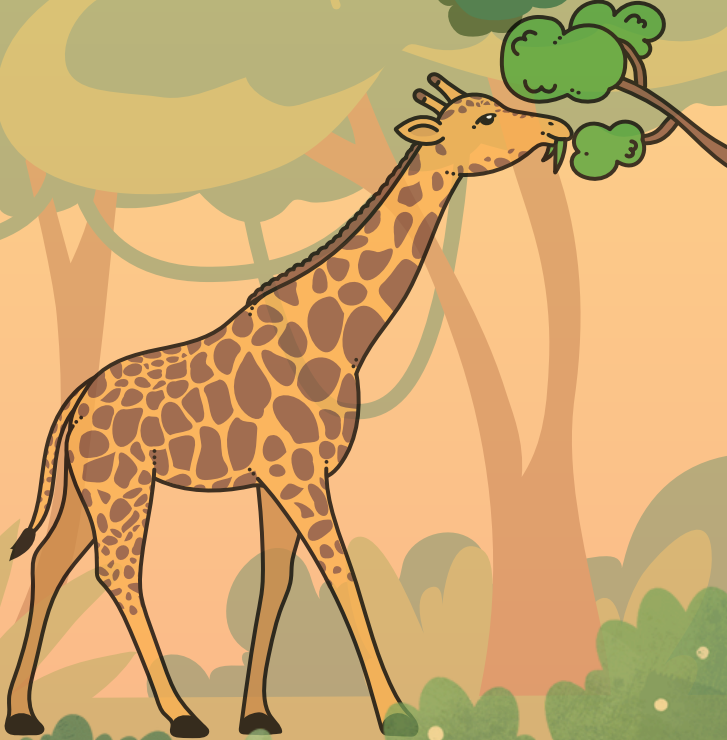
This number is only for them. This does not count as the additional number.

*Please remember that costumes for solos and duets are the financial responsibility of each skater.
(Costumes must have approval from the show director at least 2 weeks before dress rehearsal.)*

IMPORTANT DATES

& TIMES!

- **Ice Show Registration Opens (*Group Numbers*)**
 - November 12, 2024
- **Ice Show Registration Closes**
 - December 7, 2024
- **Solo/Duet information distributed**
 - March 11, 2025
- **Ice Show rehearsals**
 - March - May 2025
- **Ice Show Week**
 - Group and Individual photos - TBD
 - April 28th- 4:00-8:30pm
 - Photo schedule TBD
 - 1st Half Dress Rehearsal
 - April 30th- 6:00-8:00pm
 - Half Dress Rehearsal
 - May 1st- 2nd 6:00-8:00pm



GPD SKATING ACADEMY

For additional information, please contact our
Figure Skating Director:



JULIE BRINSKELLE

julie.brinskelle@glenviewparks.org

Direct Line: 224-521-2039

Main Line: 847-724-2800

1851 Landwehr Road, Glenview, IL 60026

www.glenviewicecenter.org



ICE SHOW 2025 AT A GLANCE

Snowplow Sam 1-3

318025_A \$80

Tuesday, April 1st 5:30-6:10pm
Tuesday, April 8th 5:30-6:10pm
Saturday, April 19th 12:00-12:40pm
Saturday, April 26th 12:00-12:40pm

Basic 1 & 2

318025_B \$80

Tuesday, April 1st 6:10-6:50pm
Tuesday, April 8th 6:10-6:50pm
Saturday, April 19th 12:00-12:40pm
Saturday, April 26th 12:00-12:40pm

Basic 3 & 4

318025_C \$130

Tuesday, April 1st 5:30-6:10pm
Tuesday, April 8th 5:30-6:10pm
Saturday, April 19th 12:40-1:20pm
Saturday, April 26th 12:40-1:20pm

Basic 5, 6, & Pre Free Skate

318025_D \$130

Tuesday, April 1st 6:10-6:50pm
Tuesday, April 8th 6:10-6:50pm
Saturday, April 19th 1:20-2:00pm
Saturday, April 26th 1:20-2:00pm

Adults

318025_M \$80

Friday, March 21st 6:40-7:40pm
Friday, April 4th 6:40-7:40pm
Friday, April 11th 6:40-7:40pm
Friday, April 18th 6:40-7:40pm
Friday, April 25th 6:40-7:40pm

Bronze/ Silver

318025_E \$130

Tuesday, April 1st 6:50-7:30pm
Tuesday, April 8th 6:50-7:30pm
Saturday, April 19th 2:00-2:40pm
Saturday, April 26th 2:00-2:40pm

Gold/Platinum

318025_F \$130

Tuesday, April 1st 6:10-6:40pm (*off-ice*)
Tuesday, April 1st 6:50-7:30pm
Tuesday, April 8th 6:10-6:40pm (*off-ice*)
Tuesday, April 8th 6:50-7:30pm
Saturday, April 19th 3:10-3:40pm (*off-ice*)
Saturday, April 19th 3:50-4:40pm
Saturday, April 26th 3:10-3:40pm (*off-ice*)
Saturday, April 26th 3:50-4:40pm

Graduating Seniors Number

318025_L \$75

Friday, March 21st 6:40-7:40pm
Friday, April 4th 6:40-7:40pm
Friday, April 11th 6:40-7:40pm
Friday, April 18th 6:40-7:40pm
Friday, April 25th 6:40-7:40pm

***Snowplow Sam and Basic 1 & 2 \$80
1st Group number \$130 each additional
number after that is \$75. Must be paid at
the same time during registration to get
additional numbers for \$75***

Glenview Blades

Preliminary/Pre-Juvenile

(included in the 24/25 season)

Thursday, March 13th 6:00-7:00am
Thursday, March 20th 6:00-7:00am
Thursday, April 17th 6:00-7:00am

Glenview Blades

Aspire 1 & Aspire 3

(included in the 24/25 season)

Tuesday, March 18th 5:30-6:10pm
Saturday, April 12th 4:30-5:30pm
Saturday April 26th 2:50-3:30pm

Soloist/Duet Freestyle Sessions

(\$7per 30min)

Thursday, March 13th 7:00-7:30am
Thursday, March 20th 7:00-7:30am
Thursday, April 3rd 6:00-7:30am
Thursday, April 10th 6:00-7:30am
Thursday, April 17th 7:00-7:30am
Thursday, April 24th 6:00-7:30am

Platinum Plus

318025_G \$130

Saturday, April 12th 3:50-4:30pm
Saturday, April 19th 2:50-3:50pm
Saturday, April 26th 2:50-3:50pm

Basic 3-Bronze Specialty

318025_J \$75

Tuesday, March 11th 5:30-6:10pm
Saturday, April 12th 3:10-3:50pm
Tuesday, April 15th 5:30-6:10pm
Tuesday, April 22nd 5:30-6:10pm

High School

318025_K \$75

Tuesday, March 11th 5:30-6:10pm
Thursday, March 13th 6:30-7:00pm (*off-ice*)
Thursday, March 20th 6:30-7:00pm (*off-ice*)
Saturday, April 12th 2:00-3:00pm
Tuesday, April 15th 5:30-6:10pm
Tuesday, April 22nd 5:30-6:10pm

Soloist Flag Opening

318025_H \$75

Tuesday, March 11th 6:10-6:50pm
Tuesday, March 18th 6:10-6:50pm
Saturday, April 12th 1:00-2:00pm
Tuesday, April 15th 6:10-6:50pm
Tuesday, April 22th 6:10-6:50pm

Production

318025_I \$75

Tuesday, March 11th 6:50-7:30pm
Tuesday, March 18th 6:50-7:30pm
Saturday, April 12th 12:00-1:00pm
Tuesday, April 15th 6:50-7:30pm
Saturday, April 19th 4:40-5:30pm
Tuesday, April 22nd 6:50-7:30pm
Saturday, April 26th 4:40-5:30pm

To participate in a group number, skaters must be enrolled in at least one Learn to Skate session during the 2024-2025 season (Fall to Winter) or skate at least two hours of freestyle ice per week from September 2024 to May 2025 at Glenview Community Ice Center. Group placement will be based on class level as of December 3, 2024, or the highest USFS freestyle test passed by November 30, 2024.

GROUP NUMBERS AT A GLANCE

Snowplow Sam 1-3 (318025-A) \$80

All Snowplow Sam Skaters registered for GPD Skating Academy Classes for Fall 2024 or our current 2024-25 Winter Session are eligible to register.

Basic 1&2 (318025-B) \$80

All Basic 1&2 Skaters registered for GPD Skating Academy Classes for Fall 2024 or our current 2024-25 Winter Session are eligible to register.

Basic 3&4 (318025-C) \$130

All Basic 3&4 Skaters registered for GPD Skating Academy Classes for Fall 2024 or our current 2024-25 Winter Session are eligible to register.

Basic 5, 6 & Pre-Free Skate (318025-D) \$130

All Basic 5, 6, & Pre Free Skate Skaters registered for GPD Skating Academy Classes for Fall 2024 or the current 2024-25 Winter Session are eligible to register.

Bronze/Silver (318025-E) \$130

Includes the following levels:

Bronze, Silver or Passed Pre-Preliminary as of 11/23/24

Gold/ Platinum (318025-F) \$130

Gold Through Pre/Open Juvenile Freestyle levels includes the following levels:

Gold, Platinum, or Passed Preliminary, Pre-Juvenile, Juvenile Freestyle level as of 11/23/24

Platinum Plus (318025-G) \$130

Intermediate-Senior Includes the following levels:

Intermediate, Novice, Junior, Senior

Passed Intermediate Freestyle as of 11/23/24

Opening Flag Soloist Number (318025-H) \$75

Only soloists/duets are eligible to be a part of this opening number.

Production (318025-I) \$75

Silver and up

Open to all skaters who are in Silver and above levels.

Basic 3 through Bronze Specialty (318025-J) \$75

Open to skaters in levels Basic 3, Basic 4, Basic 5, Basic 6, Pre-free skate, and Bronze.

High School Number (318025-K) \$75

Freshmen through Seniors

High school number is open to all high school participants.

Adults (318025-M) \$80

All Adult skaters registered for GPD Skating Academy Classes for Fall 2024 or the current 2024-25 Winter Session are eligible to register.

Graduating Seniors Number (318025-L) \$75

High school Seniors number is open to all high school graduating seniors.

Glenview Blades Aspire 1 & Aspire 3

Open to Glenview Blades skaters on the Aspire 1 and Aspire 3 team for the 2024-2025 season.

Glenview Blades Preliminary & Pre-Juvenile

Open to Glenview Blades skaters on the Preliminary and Pre-Juvenile team for the 2024-2025 season.

***Snowplow Sam and Basic 1 & 2 \$80
1st Group number \$130 each additional
number after that is \$75. Must be paid at
the same time during registration to get
additional numbers for \$75***

To participate in a group number, skaters must be enrolled in at least one Learn to Skate session during the 2024-2025 season (Fall to Winter) or skate at least two hours of freestyle ice per week from September 2024 to May 2025 at Glenview Community Ice Center. Group placement will be based on class level as of December 3, 2024, or the highest USFS freestyle test passed by November 30, 2024.