

# The Grove Redfield Estate

1421 Milwaukee Ave., Glenview, IL 60025

*RedfieldEstate.org* 🌸 (847) 298-0095



## Equipment List

- 10 – 8 ft. rectangular banquet tables (*seats 8*)
- 7 – 6 ft. rectangular banquet tables (*seats 6*)
- 32 – 48 inch round banquet tables (*seats 6-7*)
- 18 – 30 inch round tables (*seats 4*)
- 4 – high bar, cocktail tables (*to stand at*)
- 5 – 6 ft. long x 18” wide rectangular tables
- 125 – cherry wood, black padded seat folding chairs (*inside use only*)
- 175 – white folding chairs with padded seat (*outdoor use only*)
- 2 – high chairs
- 1 – booster seat
- Coat hangers
- Carts to move equipment

*If you choose to rent any other tables or chairs, you must get approval first from The Grove.*

### 🌸 Our bathrooms are equipped with:

- Liquid hand soap
- Electric hand dryers
- Toilet paper

### 🌸 Our kitchen is equipped with:

- 1 commercial, 10-burner gas stove with 2 ovens
- 1 commercial, double door refrigerator in kitchen
- 1 extra large commercial double door refrigerator in garage
- Stainless steel triple sink in the Redfield carriage house
- Double basin sink in kitchen in the Redfield main house
- 5 trash cans with liners and recycling bins
- Freezer space
- 1 refrigerator for cake delivery
- Storage space for deliveries of linens, dishes, liquor, etc. is also available in the Redfield carriage house.

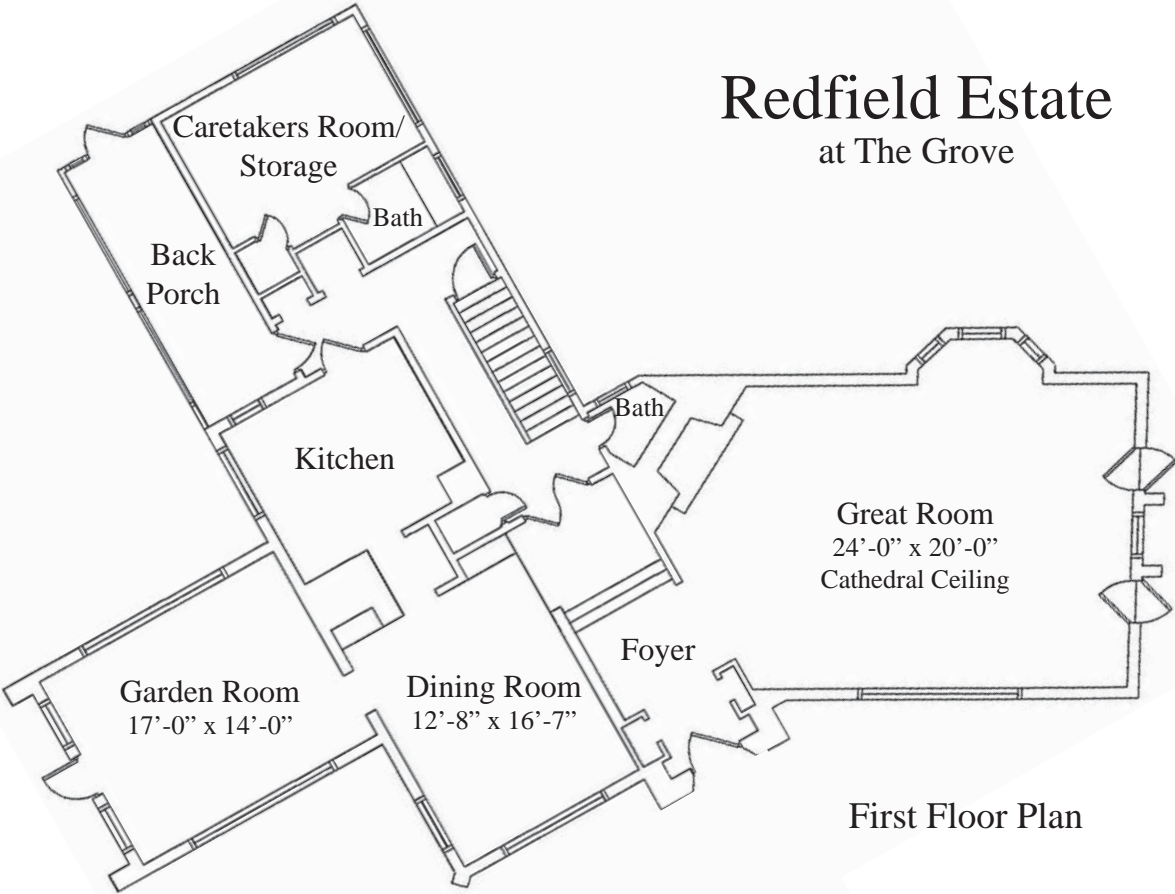
### 🌸 Extra Amenities:

- Projection screen
- 2 flip chart stands
- 1 small podium
- Wireless internet access available in the Redfield main house.

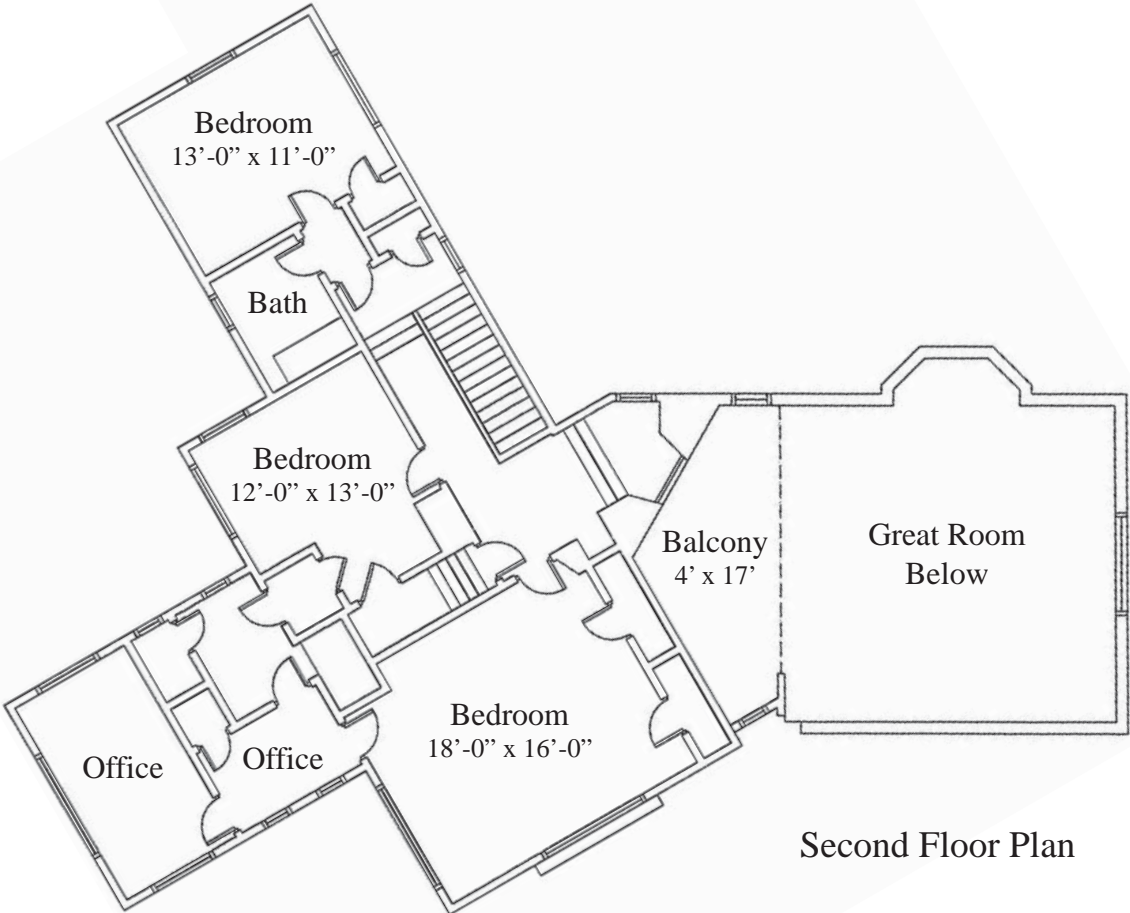
### 🌸 Other Details:

- The pavilion, outdoor areas and gazebo areas have electric outlets available.
- The Estate is air-conditioned.
- Some of the equipment may change from time to time. Should you have any questions regarding the use of the equipment please check with us at The Redfield Estate at (847) 298-0095.

# Redfield Estate at The Grove



First Floor Plan



Second Floor Plan